

**Large Area Periodic, Systematically Changing, Multi-Shape Nanostructures by Laser
Interference Lithography
and Cell Response to these Topographies**

Erden Ertorer^{a, b}, Fartash Vasefi^{c, d}, Joel Keshwah^e, Mohamadreza Najiminaini^{c, d}, Christopher Halfpap^f, Uwe Langbein^f, Jeffrey J.L. Carson^{c, d}, Douglas W. Hamilton^e, and Silvia Mittler^b

^aBiomedical Engineering Program, Faculty of Engineering, The University of Western Ontario
(Western University), London, ON, Canada

^bDepartment of Physics and Astronomy, The University of Western Ontario (Western
University), London, ON, Canada

^cImaging Program, Lawson Health Research Institute, London, ON, Canada

^dDepartment of Medical Biophysics, Schulich School of Medicine and Dentistry, The University
of Western Ontario (Western University), London, ON, Canada

^eDivision of Oral Biology, Schulich School of Medicine and Dentistry, The University of
Western Ontario (Western University), London, ON, Canada

^fRheinMain University of Applied Sciences, Department of Physics, Am Brückweg 26, 6428
Rüsselsheim, Germany

(Corresponding author: smittler@uwo.ca)

Abstract: This paper describes the fabrication details to form large area systematically changing multi-shape nanoscale structures on a chip by laser interference lithography. The feasibility of fabricating different geometries including dots, ellipses, holes, and elliptical holes in both x - and y - directions on a single substrate is shown by implementing a Lloyd's interferometer. We analyzed the fabricated structures at different substrate positions with respect to exposure time, exposure angle and associated light intensity profile. We present experimental details related to the fabrication of symmetric and biaxial periodic nanostructures on photoresist, silicon surfaces, and ion milled glass substrates. Primary rat calvarial osteoblasts were grown on ion-milled glass substrates with nanotopography with a periodicity of 1200 nm. Fluorescent microscopy revealed that cells formed adhesions sites coincident with the nanotopography after 24 hours of growth on the substrates. The results suggest that laser interference lithography is an easy and inexpensive method to fabricate systematically changing nanostructures for cell adhesion studies. The effect of the different periodicities and transition structures can be studied on a single substrate to reduce the number of samples significantly.

Keywords: periodic nanostructures, laser interference lithography, Lloyd's interferometer, adhesion and spreading of cells, osteoblasts.

1 Introduction

Nano-scale periodic structures have gained research attention in the last decades as a result of improvements to nanofabrication and nanostructure characterization methods. Their applications include optical gratings [1], photonic crystals [2], bio-sensors [3–5], and fabrication of surface topographies for microbiological studies [6–10]. There are several ways to create nanoscale pattern, but most of them, e.g. electron beam lithography (EBL) and focused ion beam lithography (FIB) have low fabrication speed and typically require complex instrumentation. Laser interference lithography (LIL) is a simple and relatively inexpensive technique to create periodic structures over large areas [11], [12]. The Lloyd’s interferometer provides a flexible setup for laser interference lithography with the possibility to create nanoscale structures with different periodicities without additional optical alignment modifications [11], [12].

Most researchers using Lloyd’s systems have focused on creating uniform patterns over large areas [13], [14]. However, for some studies, especially the those in the early device development stage, where systematic variation of parameters is necessary, fabrication of a variety of multiple and/or gradually changing structures on a single substrate is the desired goal. A typical example is the study of the influence of surface topographies in a systematic fashion in the field of cell biology, where the objective is to examine how cells respond to lines, broken lines and dots or combinations of them on microscopic to nanoscopic scales [15–18]. Another example is the expanding field of plasmonics, where structures of different sizes and periodicities correspond to different resonance conditions [19–23]. Furthermore, structures with biaxial periodicities enable cases where it is critical to implement different periodicities on the x - and y -axes therefore enabling two measurements on one sample by simply considering the polarization direction of the probing light [24]. Exploiting biaxial periodicity by polarized light is especially applicable to surface enhanced Raman spectroscopy (SERS) whereby an active substrate with multi-wavelength or tunable

excitation can be created [24]. Therefore, fabrication of structures with biaxial periodicity facilitates parallel experimentation, which reduces sample preparation time, decreases the number of independent experiments needed and enables rapid optimization of experimental conditions.

In this paper, we describe a LIL method to create large scale, periodic and biaxial periodic, systematically varying multi-shape structures on a single substrate. First, we computed the optimal parameters for a Lloyd's mirror interferometer implementing a Gaussian laser beam intensity distribution to achieve a large intensity variation along the substrate. Second, we fabricated various multi-shape periodic and biaxial periodic structures by using different exposure times and exposure angles. The fabricated structures were analyzed with SEM. Finally, ion-milled glass substrates carrying patterns as surface topography were used for cell adhesion experiments.

2 Methods

2.1 Theory

Two coherent beams on a plane create an interference pattern. This pattern can be used to expose a photoresist layer to create permanent structures [12]. The Lloyd's mirror interferometer consists of a mirror placed perpendicular to the sample plane (see Fig.1a). When a diverging laser beam from a spatial filter (lens and pinhole) illuminates a Lloyd's interferometer, the sample is exposed both to the direct beam and to the reflected beam. The addition of two laser beams creates a light intensity interference pattern on the substrate. The periodicity of the pattern (Λ) is given by Lloyd's interferometer equation [12]:

$$\Lambda = \frac{\lambda}{2\sin\theta} \quad (1)$$

Where λ is the wavelength of the laser beam, and θ is the angle between the mirror and the axis of the direct laser beam (optical axis of the system).

A Gaussian beam intensity distribution on the substrate for Lloyd's interferometer created by the direct and reflected beams can be represented by equation (2) [25]:

$$I = 2I_0 \text{Exp} \left(\frac{-2x^2}{\omega_r^2 \cos^2 \theta} + \frac{-2y^2}{\omega_r^2} \right) (2)$$

Where, I_0 is the peak intensity of the beam, x and y are the distances from the center of the beam, ω_r is the Gaussian beam radius at the distance of the substrate, which is defined as the distance where the intensity decreases to $1/e^2$ from its maximum value and θ is the angle between the mirror and the optical axes of the experiment (central line of the direct laser beam).

For larger values of magnification and larger distances between the pinhole and sample, the intensity distribution becomes relatively flat along the surface of the mirror geometry yielding uniform structures. This large distance geometry is used by most researchers implementing the Lloyd's mirror interferometer. On the other hand, confining the Gaussian beam or bringing the Lloyd's mirror setup closer leads to a higher variation of the intensity along the sample and mirror. A distinct intensity variation can create various photoresist structures on the substrate. Creating two dimensional structures can be achieved by rotating the photoresist coated substrate by 90° and then applying a second exposure. For instance, the intensity distributions for the first, the second, and the total exposure of an experiment with $d = 23.5$ cm, $\omega_0 = 1.9$ mm, and $\theta = 14^\circ$ on a sample with a size of 4×4 cm² are illustrated in Figure 1b.

2.2 Experimental

A 442 nm wavelength HeCd Laser (Omnichrome Series 74, Model 4074-P-A03, CVI Melles Griot, NM, USA) with a coherence length L_c of 30 cm was operated at 80 mW. The 1.5 mm diameter laser beam passed through a lens-pinhole system built with a 20X objective lens (Zeiss LD Plan-Neofluar 20X/0.4 Corr Ph2), and a 5- μ m pinhole mounted on a three axis stage (Newport

Three-Axis Spatial Filter, Model M-900, Newport, CA, USA). A time-controlled shutter was situated between the laser and the objective lens to control the exposure time during each experiment. The pinhole was used to remove undesirable components of the laser beam such as donut mode contributions. An iris was used to prevent reflections of the expanded laser beam. The Lloyd's mirror/sample was placed on a two axis stage (X and θ) in such a way that the common corner of the sample and the mirror was located on the optical axis. The distance between the sample and the pinhole along the direction of the optical axis was 23.5 cm.

2.3 Fabrication of Nano Structures

Experiments were performed with (2.5 x 2.5) cm² Fisher Brand microscope slides (soda lime glass) or (2.5 x 2.5) cm² fused silica slides (Valley Design Corp., USA) immersed in Nano-Strip (Cyantec Inc., CA, USA) at 60°C for 20 minutes to remove possible organic and inorganic contamination. In order to increase the adhesion of the photoresist, substrates were silanized with hexamethyldisilazane (HMDS) in an oven (YES-3TA HDMS Oven, Yield Engineering, CA, USA). Then substrates were spin-coated at 4000 rpm for 45 seconds with 1:4 Shipley S1805 photoresist (Shipley, MA, USA) diluted with Microposit Thinner Type P (Shipley, MA, USA). Samples were soft-baked for five minutes at 115°C on a hot plate. The resulting photoresist thickness was 320 ± 10 nm found by analysis of electron microscopy images of FIB cut samples. To achieve the photoresist structures which carry the same periodicity on both axes, samples were fabricated with a mirror-laser beam axis angle $\theta \sim 15^\circ$ yielding a periodicity Λ of ~ 800 nm. The sample was exposed first for 18 seconds, rotated by 90° and exposed a second time for 18 seconds. A second sample was exposed first for 18 seconds, then 12 seconds after the 90° rotation. For the biaxial periodic structures, with different periodicities in x - and y - direction, θ was set to $\sim 11^\circ$ yielding a periodicity Λ of ~ 1200 nm. After the first exposure, (for various times) the sample was developed, then placed in the Lloyd's setup rotated by 90° with respect to the first exposure

and exposed a second time (for various times) at an angle θ of $\sim 15^\circ$ to obtain a periodicity Λ of ~ 800 nm.

Substrates were developed in MF319 developer (Shipley, MA, USA). Symmetric structures were developed once after the two exposures. Biaxial structures were developed twice, once after the first exposure and then again after the second exposure. The first development was 45 seconds; the second development was 20 seconds. After each development, substrates were rinsed with copious amounts of deionized water and dried under nitrogen. Finally, samples were hard-baked for ten minutes at 115°C on a hot plate. All the procedures were performed in a clean room facility at $21.5 \pm 0.5^\circ\text{C}$, relative humidity of $30 \pm 10\%$, and under yellow light.

The photoresist patterns were also used as etching masks for the fabrication of metallic or silicon nanostructures. A 300 nm photoresist layer was spun on a p-type silicon substrate (500 μm thickness) with a 30 nm chromium layer deposited by an electron-beam evaporation system. The photoresist acted as an etching mask for the chromium layer resulting in a chromium pattern identical to the photoresist pattern. The patterned chromium nanostructures acted as a masking layer for silicon ion etching. Therefore, the pattern and objects fabricated lithographically in photoresist were transferred to the chromium layer by wet etching as well as the silicon wafer by deep reaction ion etching (DRIE; Alcatel 601E Deep Silicon Etch, France).

Fused silica samples carrying line and dot structures at a periodicity of 1200 nm in photoresist were ion milled (Vacu Tec Plasma Systems: control unit CPU 500, matching Plasmamatch; ENI: RF-generator ACG-3XL; Witney, Oxfordshire, UK) with SF_6 at a gas flow rate of 20 sccm, 200 W plasma power and a pressure of ~ 8 Pa. Under these conditions, a surface topography with a profile depth of ~ 100 nm was achieved. The structures were analyzed with SEM after ion milling to acquire the profile depth. The fused silica nanotopographic samples were used in the cell studies.

2.4 Osteoblast Culture

All studies involving rats were performed in compliance with the University Council on Animal Care at the University of Western Ontario under approved protocols. Rat calvarial osteoblasts (RCOs) were obtained from newborn rat calvariae and cultured as previously described [26].

2.5 Immunocytochemistry

Osteoblasts were plated at a density of 39 cells/mm² and were fixed in 4% paraformaldehyde at 24 h post-seeding. Samples were then stained with rhodamine-conjugated phalloidin (Sigma-Aldrich, Canada), 4,6-diamidino-2-phenylindole dihydrochloride (DAPI) (Sigma-Aldrich, Canada), and vinculin (Sigma-Aldrich, Canada) as previously described [7], [26]. Images were captured from each surface on an AxioScope microscope (Zeiss, Germany) using an AxioCam digital camera and AxioImager software.

3 Results

3.1 2D Multi-Shaped Structures

To correlate nanostructure shape with corresponding exposure and light intensity conditions, nine regions on each sample were chosen and characterized. Figure 2 shows the exposure intensity map as well as the selected regions where SEM images were taken. The first region $R_{(0,0)}$ was chosen at the origin of the xy -coordinate system and corresponded to the location with the highest exposure intensity. The remaining eight regions were distributed 10 and 15 mm, respectively away from the origin in both x - and y -directions. For instance, $R_{(10,15)}$ represented the region that was displaced 10 mm in the x -direction and 15 mm in the y -direction relative to the origin. As Figure 2 shows, the nanostructure shape correlated directly with the exposure time and the beam intensity at each region.

In the case of the equivalent double exposure of sample 1, it was expected from the Equation 1 that the exposure intensity dropped by 6% and 14% at a distance of 10 and 15 mm away from the highest value at the origin, respectively. The diagonal in the xy -coordinate system was an axis of symmetry for the substrate. At the origin, ($R_{(0,0)}$ in Figure 2b), round pillars were observed. Moving from the origin to $R_{(10,10)}$ the dot diameter gradually increased and some were connected. After passing $R_{(10,10)}$, connected dots formed holes and at $R_{(15,15)}$ the exposure was not high enough for the developer to etch the photoresist through to the substrate.

For areas off the axis of symmetry, either the x - or the y - component, the structures were elongated with respect to the other direction: elongated meaning that when lines form, the lines were along the x -direction on the right hand side of the symmetry line and along the y -direction on the left hand side of the symmetry line. The directions of the long axes of ellipses were analogous. The result was that $R_{(10,0)}$ contained objects elongated in the x -direction and $R_{(0,10)}$ contained structures elongated in the y -direction.

The elongation trend continued into wavy lines in either of the directions. The off diagonal areas $R_{(10,15)}$ and $R_{(15,10)}$ contained broad wavy lines that were well-separated from one another. The ensemble of the wavy lines can be interpreted as a pre-structure for the hole array located on the axis of symmetry at $R_{(15,15)}$ obtained with an exposure of lower intensity.

Another observation from Figure 2 was the fact that in the high intensity areas, separated islands or nanodots were formed and with decreasing illumination intensity, the structures became connected with sharp linear features. Further decreases in the intensity led to a shape inversion, i.e. the formation of nanoholes.

The use of different exposure times when the substrate was in the x - and y -orientations in sample 2 resulted in samples with unique nanostructures within each region. Figure 2d clearly shows that the overall structure was not symmetric with respect to the diagonal. For example, the

nanostructures in $R_{(10,0)}$ had a linear shape, while the nanostructures in $R_{(0,10)}$ were nominally oval-shaped. Furthermore, the nanostructures formed at the $R_{(0,0)}$ in Figure 2d were slightly elongated in the x -direction, making them elliptical, while the nanostructures observed at $R_{(0,0)}$ in Figure 2b were nearly circular.

3.2 Nanostructures with biaxial periodicity

The combination of different exposure time, different exposure angles for the x - and y -axes, and post processing resulted in a wide variety of structures with controllable biaxial periodicity and morphology, including dots, holes, ellipses, elliptical holes, lines, and wavy lines. For instance, Figure 3a shows elliptical nanodots in photoresist on a glass substrate with 1200 nm periodicity on the x -axis and 800-nm periodicity on the y -axis that resulted from exposure sets of 20+20 seconds. Figure 3b shows elliptical nanoholes in photoresist on a glass substrate with similar biaxial periodicity to the structure in Figure 3a that resulted from an exposure set of 22+18 seconds. Figure 3c and Figure 3d show silicon nanopillar and nanohole structures with a height equal to 300 nm. In order to achieve 800 nm spacing on the x -axis and 1200 nm on the y -axis, the exposures sets of 15+25 seconds and 11+22 seconds were used to form nanodots and nanoholes, respectively.

3.3 Cell Response to Nanotopographies

We tested the influence of the nanotopographies, explicitly on a dot pattern (Fig. 4a) and on a line pattern (Fig. 4b). Cell adhesion and spreading of primary rat calvarial osteoblasts (Fig. 5) was tested. The vinculin stain (green) depicts the adhesions of the cell onto its substratum, whereas the f-actin (red) depicts actin microfilaments and hence relays information on cell morphology. The

cell nuclei were stained with DAPI (blue). In the control experiments on smooth surfaces (no pattern) outside the structure of the substrates (Fig. 5, top row), adhesion sites (vinculin) were randomly oriented, as was cell spreading (f-actin). On the dot patterns (Fig. 5, middle row), adhesion sites were formed on the peaks of the topographies, which was evident from the dot patterning apparent in the vinculin-stained image (see inset). The cell morphology did not conform to the shape of the topography. On the 1200 nm spaced lines (Fig. 5, bottom row), osteoblasts formed densely adhesions in parallel with the long axis of the topography (vinculin), and the overall morphology (f-actin) was also aligned with the groove direction.

5 Discussion

Laser interference lithography is a straight-forward, flexible, and inexpensive method to create a variety of nanostructures. Utilizing Equation 2, experimental parameters can be selected to achieve a cumulative illumination pattern on the photoresist that leads to a wide range of patterns. We used a short distance between the pinhole and the substrate to create a high intensity gradient along the surface, which systematically yielded a variety of structures with morphologies, such as dots, holes, ellipses, lines, and transitions between morphologies. Changing the stage angle and the exposure time for two different exposure axes created structures with biaxial periodicities.

Electron beam lithography (EBL) and focused ion beam (FIB) technologies provide the freedom to fabricate more arbitrary structures with finer features, however, they both require expensive setups and high operating costs and work in series. Therefore, creating large area structures, such as 15 mm x 15 mm, as shown in this study, EBL and FIB will be impractical in terms of the time requirements for the fabrication. Therefore LIL is a fast, inexpensive and “parallel operating” alternative to create systematically changing structures as well as periodic and biaxial structures.

Osteoblasts showed a differential response to 1200 nm spaced dots and lines, with qualitative changes in the arrangement and distribution of adhesions sites. In addition the cell morphology is strongly influenced by the form and orientation of the nanotopography. The relative importance on topographic regulation of focal adhesion size and stability in osteoblasts has received much attention. Biggs et al. previously demonstrated that nanopits reduced the total cell area occupied by adhesion sites in osteoblasts [27] and that square and hexagonal nanopit arrays resulted in formation of focal complexes [28]. Our results show that nanotopographies strongly influence the patterns of adhesion formation in osteoblasts.

All these structures can also be fabricated in thick and thin metal films placed on a planar substrate to obtain plasmonic structures [13], [29], [30]. The localized surface plasmon resonances (LSPR) of these metallic arrays are a function of material, size, shape, spacing and periodicity of the structures. The size and the spacing of the structures could be adjusted by fine tuning the exposure times and the exposure angle. Combined bimetallic nanostructures, consisting of two different metal layers, can provide additional tunability to the LSPR properties [29]. Nanohole and nanodot arrays with biaxial periodicity provide intrinsically two different LSPR frequencies due to the possible choice of the probing polarization direction of the light. Meanwhile, there is a multitude of LSPR sensors and devices proposed, simulated and experimentally demonstrated, that implement above described parameters. A single chip carrying systematically changing nanostructures can help to quickly find the optimal nanostructure for the problem at hand to be solved with plasmonics. If an optical experiment is performed on elongated structures, the polarization of the probing light is exploited to detect the morphometric differences. The sharp linear features could act as an active substrate with hot spots in the case of a gold or silver nanostructure applied in SERS or fluorescence enhanced spectroscopy (FES).

Due to the geometrical limitations, the Lloyd's laser interferometer has a limited surface coverage and for a wavelength of 442 nm the fabricated structures were limited to roughly 600 to 1200 nm periodicity. One potential improvement here would be a sample mount allowing the adjustment of the angle between the mirror and the sample. This will add an additional degree of freedom and would extend the usable range of coverage and periodicity [14]. However, ultra-fine structures may require anti-reflective coatings on the sample to enhance optical performance [12]. In order to reach smaller periodicities, a shorter wavelength lasers can be utilized. For example, extreme ultraviolet interference lithography (EUV-IL) has produced feature sizes down to 10 nm [31].

Some non-uniformity within structures were observed which were due to photoresist connections between adjacent features, especially for sample 1 at locations $R_{(0,10)}$, $R_{(10,10)}$, and $R_{(10,0)}$. These samples could be treated with oxygen plasma after sample development, which would result in a removal of the connections between adjacent nano-structures and individual features with a higher degree of uniformity.

Although structures created with LIL are limited to grooves, holes and dots, nanolithography employing micro-lens arrays has been shown capable of fabricating periodic arrays of arbitrary structures [32], [33]. The technique utilizes an array of focal points from a laser beam that also enables parallel patterning [33], [34]. However, it requires micro-lens array fabrication prior to the fabrication of the intended nano-structures. The periodicity of nanostructure array depends greatly on spacing between adjacent micro-lenses [33], [34]. It had been shown that plasmonic nanolithography (PNL) can reach down to 12 nm feature size. However, that techniques is limited to periodic structures [35].

Surface topography features that systematically change in pattern have become an important tool to probe the limits of cell sensing, as well as to increase our understanding of how cells become activated [36]. Adhesion sites on cells are important for activation of downstream signaling

cascades that are responsible for regulation of growth, survival, migration, and differentiation [7], [36]. By selecting the most appropriate topographies, it is conceivable that implants and tissue-engineered devices could be significantly improved. Moreover, from a basic science standpoint, devices fabricated with LIL may be particularly good to assess the response of primary cell cultures, where heterogeneity in growth and response to external stimuli, which is a common place in human cells isolated from different patients, can complicate interpretation of results. Therefore, to be able to have one substrate with a variety of nanostructure pattern and their transitions allow comparison of cell responses to multiple cues at the same time.

We assume that the periodicity and the depth of structures (the aspect ratio) could provide a different behavior for cell adhesion to the substrate; therefore, in future work, the effect of the various structure depths and periodicities will be studied. The behavior of various cell types (e.g. stem cells) as well as the behavior on transitional nanostructures (in-between two structures, such as broken lines which is in-between lines and dots) should be investigated. Aside from topography, the surface chemistry can also be controlled by various surface functionalization techniques, which opens up the possibility to study the combinatorial effect of topography and surface chemistry on cell adhesion and morphology. These directions of study should provide a better understanding of implant surfaces with respect to growth and non-growth surfaces for particular cell types.

6 Conclusion

We have shown that laser interference lithography is a powerful method to fabricate large area, periodic, biaxial periodic and systematically changing structures. In comparison to FIB and EBL, LIL is straightforward, quick and inexpensive. The systematically changing structures allow optimization processes, e.g. for plasmonic structures with different resonance conditions. The system can be further developed for smaller feature sizes by employing a laser source with a smaller wavelength and for covering even larger areas.

Cell culturing studies show that primary rat calvarial osteoblasts respond to surface topographies and allow us to learn controlling their behavior on surfaces. Having biaxial periodic and systematically changing structures on the same substrate allows studying various structures with a single substrate to decrease the amount of samples and time in finding an optimum topography for a certain cell behavior response.

7 Acknowledgements

The authors thank the Western Nanofabrication Facility for hosting the Lloyd's mirror interferometer and for the help with SEM imaging and FIB. We thank Abdollah Hassanzadeh and Bozena Kaminska for helpful discussions. The NSERC BiopSys Strategic Network is recognized for financial contributions. NSERC and CFI are acknowledged for their financial support in form of Discovery Grants and equipment funding, respectively. E.E. thanks the OGS (Ontario Graduate Scholarship) Program for financial aid. S.M. thanks the Canadian Government for support through the CRC Program.

Figure Captions

Fig.1 (a) Lloyd's interferometer setup. (b) Intensity distribution of two individual exposures and the sum due to the double exposure.

Fig.2 Illumination intensity maps and SEM images of photoresist patterns of samples fabricated with LIL. (a) Cumulative illumination intensity map for 18+18 seconds of exposure. (b) SEM images of nine selected regions from samples receiving illumination corresponding to (a). Location of each image corresponds to the location in the accompanying

illumination intensity map. Scale bars represent 1 μm . (c) Cumulative illumination intensity map for 18+12 seconds exposure. d) SEM images of nine selected regions from samples receiving illumination corresponding to (b).

Fig.3 SEM images of nanostructures with biaxial periodicity (a) ellipses (in photoresist), (b) elliptical holes (in photoresist), (c) round pilars (in silicon), and (d) round holes (in silicon). Scale bars represent 1 μm .

Fig.4 SEM images of a dot (a) and a line (b) pattern on ion-milled glass substrates coated with 30 nm thick gold for SEM imaging. These example samples were cut with a focused ion beam to estimate the depth. The tilt corrected cursor height is ~ 100 nm excluding the gold coating. Scale bars represent 100 nm.

Fig.5 Rat calvarial osteoblasts cultured on smooth surfaces (top row), 1200 nm spaced nanodots (middle row) and 1200 nm spaced nanolines (bottom row). Adhesion sites were stained with vinculin (left column). Actin microfilaments were stained with f-actin (middle column). Overlay of the vinculin, f-actin and DAPI (nuclei) are depicted as green, red, and blue, respectively (right column). Insets show high resolution images of marked areas.

References

- [1] A. Akou, I. a. Gural'skiy, L. Salmon, C. Bartual-Murgui, C. Thibault, C. Vieu, G. Molnár, and A. Bousseksou, "Soft lithographic patterning of spin crossover complexes. Part 2: stimuli-responsive diffraction grating properties," *Journal of Materials Chemistry*, vol. 22, no. 9, p. 3752, 2012.
- [2] A. Reinhard, T. Volz, M. Winger, A. Badolato, K. J. Hennessy, and E. L. Hu, "Strongly correlated photons on a chip," vol. 6, no. February, pp. 1–4, 2012.
- [3] C. Escobedo, A. G. Brolo, R. Gordon, and D. Sinton, "Flow-through vs flow-over: analysis of transport and binding in nanohole array plasmonic biosensors.," *Analytical chemistry*, vol. 82, no. 24, pp. 10015–10020, Dec. 2010.
- [4] S. M. H. Rafsanjani, T. Cheng, S. Mittler, and C. Rangan, "Theoretical proposal for a biosensing approach based on a linear array of immobilized gold nanoparticles," *Journal of Applied Physics*, vol. 107, no. 9, p. 094303, 2010.
- [5] H. Jiang, T. Li, E. Ertorer, J. Yang, J. Sabarinathan, and S. Mittler, "A biosensor based on periodic arrays of gold nanodisks under normal transmission," *Sensors and Actuators A: Physical*, vol. 189, pp. 474–480, Jan. 2013.
- [6] D. W. Hamilton and D. M. Brunette, "'Gap guidance' of fibroblasts and epithelial cells by discontinuous edged surfaces.," *Experimental cell research*, vol. 309, no. 2, pp. 429–437, Oct. 2005.
- [7] D. W. Hamilton and D. M. Brunette, "The effect of substratum topography on osteoblast adhesion mediated signal transduction and phosphorylation.," *Biomaterials*, vol. 28, no. 10, pp. 1806–19, Apr. 2007.
- [8] F. Kantawong, R. Burchmore, N. Gadegaard, R. O. C. Oreffo, and M. J. Dalby, "Proteomic analysis of human osteoprogenitor response to disordered nanotopography.," *Journal of the Royal Society, Interface / the Royal Society*, vol. 6, no. 40, pp. 1075–86, Nov. 2009.
- [9] E. Kokubu, D. W. Hamilton, T. Inoue, and D. M. Brunette, "Modulation of human gingival fibroblast adhesion, morphology, tyrosine phosphorylation, and ERK 1/2 localization on polished, grooved and SLA substratum topographies.," *Journal of biomedical materials research. Part A*, vol. 91, no. 3, pp. 663–670, Dec. 2009.
- [10] E. Lamers, J. Te Riet, and M. Domanski, "Dynamic cell adhesion and migration on nanoscale grooved substrates," *Eur. Cell ...*, vol. 23, pp. 182–194, 2012.
- [11] Q. Xie, M. Hong, H. Tan, G. Chen, L. Shi, and T. Chong, "Fabrication of nanostructures with laser interference lithography," *Journal of Alloys and Compounds*, vol. 449, no. 1–2, pp. 261–264, Jan. 2008.

- [12] H. Wolferen and L. Abelman, “Laser Interference Lithography,” in *Science*, Nova Publishers, 2011, pp. 133–148.
- [13] J. W. Menezes, J. Ferreira, M. J. L. Santos, L. Cescato, A. G. Brolo, P. Photovoltaics, and B. J. W. Menezes, “Large-Area Fabrication of Periodic Arrays of Nanoholes in Metal Films and Their Application in Biosensing and Plasmonic-Enhanced Photovoltaics,” *Advanced Functional Materials*, vol. 20, no. 22, pp. 3918–3924, Nov. 2010.
- [14] I. Wathuthanthri, W. Mao, and C.-H. Choi, “Two degrees-of-freedom Lloyd-mirror interferometer for superior pattern coverage area,” *Optics letters*, vol. 36, no. 9, pp. 1593–1595, May 2011.
- [15] T. P. Kunzler, C. Huwiler, T. Drobek, J. Vörös, and N. D. Spencer, “Systematic study of osteoblast response to nanotopography by means of nanoparticle-density gradients,” *Biomaterials*, vol. 28, no. 33, pp. 5000–6, Nov. 2007.
- [16] Y. L. Khung, G. Barritt, and N. H. Voelcker, “Using continuous porous silicon gradients to study the influence of surface topography on the behaviour of neuroblastoma cells,” *Experimental Cell Research*, vol. 314, no. 4, pp. 789–800, Feb. 2008.
- [17] D. Hamilton, C. Oates, A. Hasanzadeh, and S. Mittler, “Migration of periodontal ligament fibroblasts on nanometric topographical patterns: influence of filopodia and focal adhesions on contact guidance,” *PLoS One*, vol. 5, no. 12, p. e15129, Jan. 2010.
- [18] T. P. Kunzler, T. Drobek, M. Schuler, and N. D. Spencer, “Systematic study of osteoblast and fibroblast response to roughness by means of surface-morphology gradients,” *Biomaterials*, vol. 28, no. 13, pp. 2175–82, Apr. 2007.
- [19] K. L. Kelly, E. Coronado, L. L. L. Zhao, and G. C. Schatz, “The Optical Properties of Metal Nanoparticles: The Influence of Size, Shape, and Dielectric Environment,” *The Journal of Physical Chemistry B*, vol. 107, no. 3, pp. 668–677, Dec. 2002.
- [20] Y. Xia, N. J. Halas, and G. Editors, “Shape-Controlled Surface Plasmonic Nanostructures,” *MRS Bulletin*, vol. 30, no. May, pp. 644–650, 2005.
- [21] P. K. Jain, K. S. Lee, I. H. El-Sayed, and M. a El-Sayed, “Calculated absorption and scattering properties of gold nanoparticles of different size, shape, and composition: applications in biological imaging and biomedicine,” *The journal of physical chemistry. B*, vol. 110, no. 14, pp. 7238–7248, Apr. 2006.
- [22] P. Rooney, A. Rezaee, S. Xu, T. Manifar, A. Hassanzadeh, G. Podoprygorina, V. Böhmer, C. Rangan, and S. Mittler, “Control of surface plasmon resonances in dielectrically coated proximate gold nanoparticles immobilized on a substrate,” *Physical Review B*, vol. 77, no. 23, pp. 1–9, Jun. 2008.
- [23] Q. Min, Y. Pang, D. J. Collins, N. a Kuklev, K. Gottselig, D. W. Steuerman, and R. Gordon, “Substrate-based platform for boosting the surface-enhanced Raman of plasmonic nanoparticles,” *Optics express*, vol. 19, no. 2, pp. 1648–55, Jan. 2011.

- [24] F. Eftekhari, R. Gordon, J. Ferreira, a. G. Brolo, and D. Sinton, “Polarization-dependent sensing of a self-assembled monolayer using biaxial nanohole arrays,” *Applied Physics Letters*, vol. 92, no. 25, p. 253103, 2008.
- [25] I. Byun and J. Kim, “Cost-effective laser interference lithography using a 405 nm AlInGaN semiconductor laser,” *Journal of Micromechanics and Microengineering*, vol. 20, no. 5, p. 055024, May 2010.
- [26] R. J. Miron, C. J. Oates, A. Molenberg, M. Dard, and D. W. Hamilton, “The effect of enamel matrix proteins on the spreading, proliferation and differentiation of osteoblasts cultured on titanium surfaces.,” *Biomaterials*, vol. 31, no. 3, pp. 449–60, Jan. 2010.
- [27] M. J. P. Biggs, R. G. Richards, N. Gadegaard, C. D. W. Wilkinson, and M. J. Dalby, “The effects of nanoscale pits on primary human osteoblast adhesion formation and cellular spreading.,” *Journal of materials science. Materials in medicine*, vol. 18, no. 2, pp. 399–404, Feb. 2007.
- [28] M. J. P. Biggs, R. G. Richards, N. Gadegaard, C. D. W. Wilkinson, R. O. C. Oreffo, and M. J. Dalby, “The use of nanoscale topography to modulate the dynamics of adhesion formation in primary osteoblasts and ERK/MAPK signalling in STRO-1+ enriched skeletal stem cells.,” *Biomaterials*, vol. 30, no. 28, pp. 5094–103, Oct. 2009.
- [29] C. H. Liu, M. H. Hong, H. W. Cheung, F. Zhang, Z. Q. Huang, L. S. Tan, and T. S. a Hor, “Bimetallic structure fabricated by laser interference lithography for tuning surface plasmon resonance.,” *Optics express*, vol. 16, no. 14, pp. 10701–9, Jul. 2008.
- [30] D. Xia, “A facile approach to directed assembly of patterns of nanoparticles using interference lithography and spin coating,” *Nano Letters*, pp. 1–5, 2004.
- [31] V. Auzelyte, C. Dais, P. Farquet, D. Grützmacher, L. J. Heyderman, F. Luo, S. Olliges, C. Padeste, P. K. Sahoo, T. Thomson, A. Turchanin, C. David, and H. H. Solak, “Extreme ultraviolet interference lithography at the Paul Scherrer Institut,” *Journal of Micro/Nanolithography, MEMS and MOEMS*, vol. 8, no. 2, p. 021204, 2009.
- [32] J. Kato, N. Takeyasu, Y. Adachi, H.-B. Sun, and S. Kawata, “Multiple-spot parallel processing for laser micronanofabrication,” *Applied Physics Letters*, vol. 86, no. 4, p. 044102, 2005.
- [33] Y. Lin, M. H. Hong, T. C. Chong, C. S. Lim, G. X. Chen, L. S. Tan, Z. B. Wang, and L. P. Shi, “Ultrafast-laser-induced parallel phase-change nanolithography,” *Applied Physics Letters*, vol. 89, no. 4, p. 041108, 2006.
- [34] C. S. Lim, M. H. Hong, Y. Lin, Q. Xie, B. S. Luk’yanchuk, A. Senthil Kumar, and M. Rahman, “Microlens array fabrication by laser interference lithography for super-resolution surface nanopatterning,” *Applied Physics Letters*, vol. 89, no. 19, p. 191125, 2006.

- [35] H. Liu and J. Teng, "Plasmonic nanolithography: Towards next generation nanopatterning," *Journal of Molecular and Engineering Materials*, vol. 01, no. 01, p. 1250005, Jul. 2012.
- [36] J. Y. Lim and H. J. Donahue, "Cell sensing and response to micro- and nanostructured surfaces produced by chemical and topographic patterning.," *Tissue engineering*, vol. 13, no. 8, pp. 1879–91, Aug. 2007.

FIGURES

FIG.1

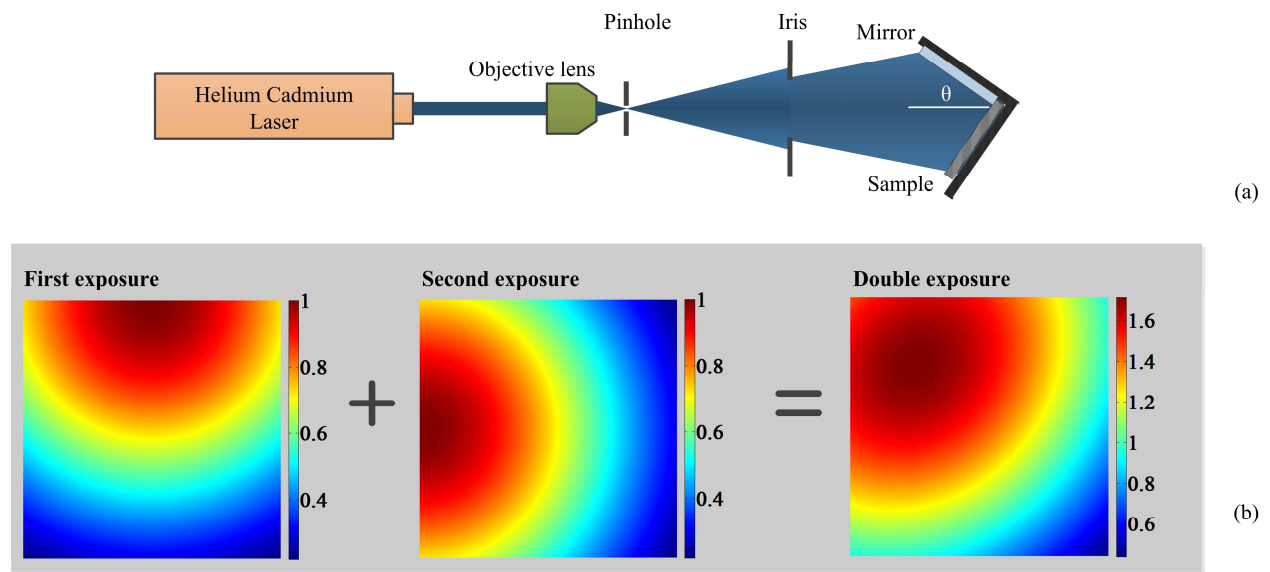
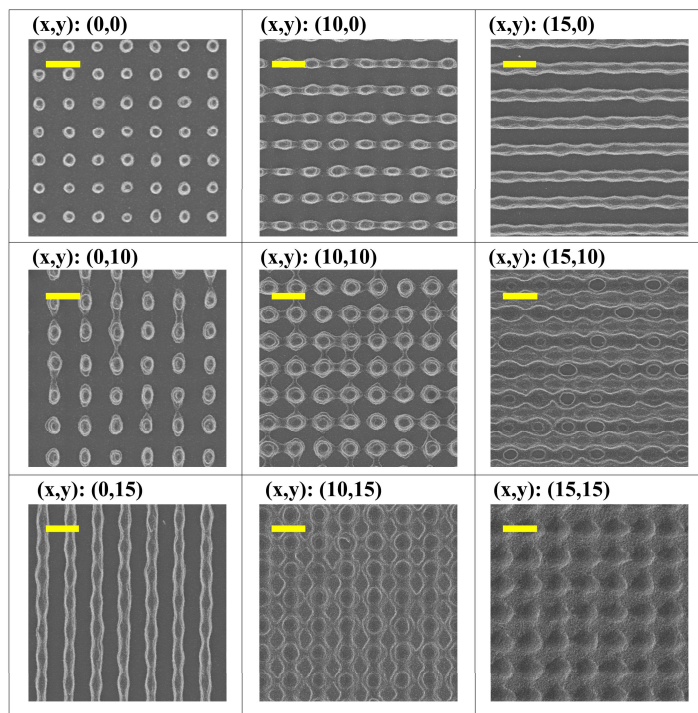
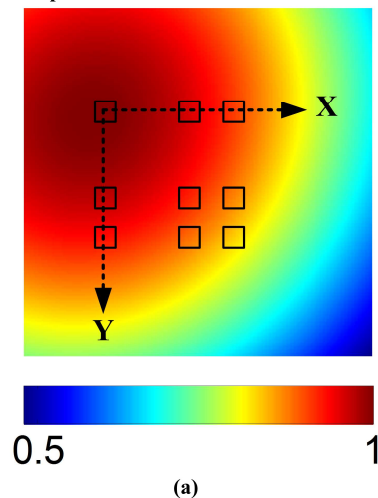


FIG.2

Sample 1

Exposure: 18 + 18 sec



Sample 2

Exposure: 12 + 18 sec

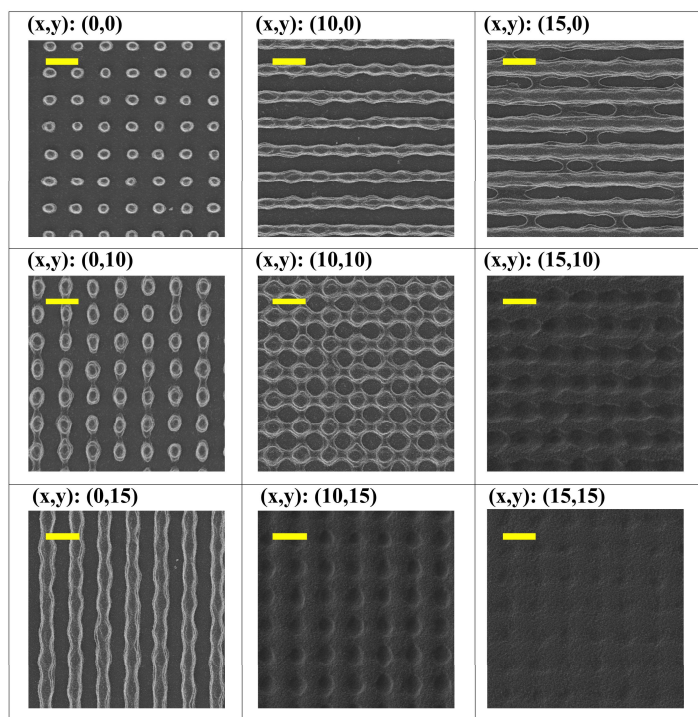
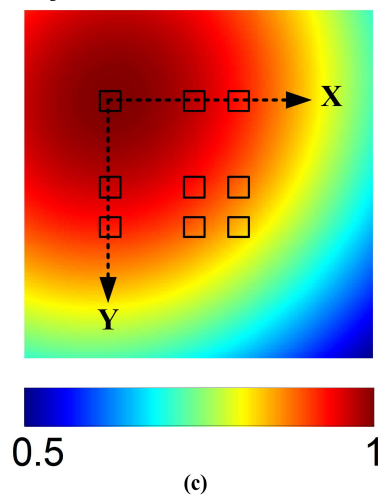


FIG.3

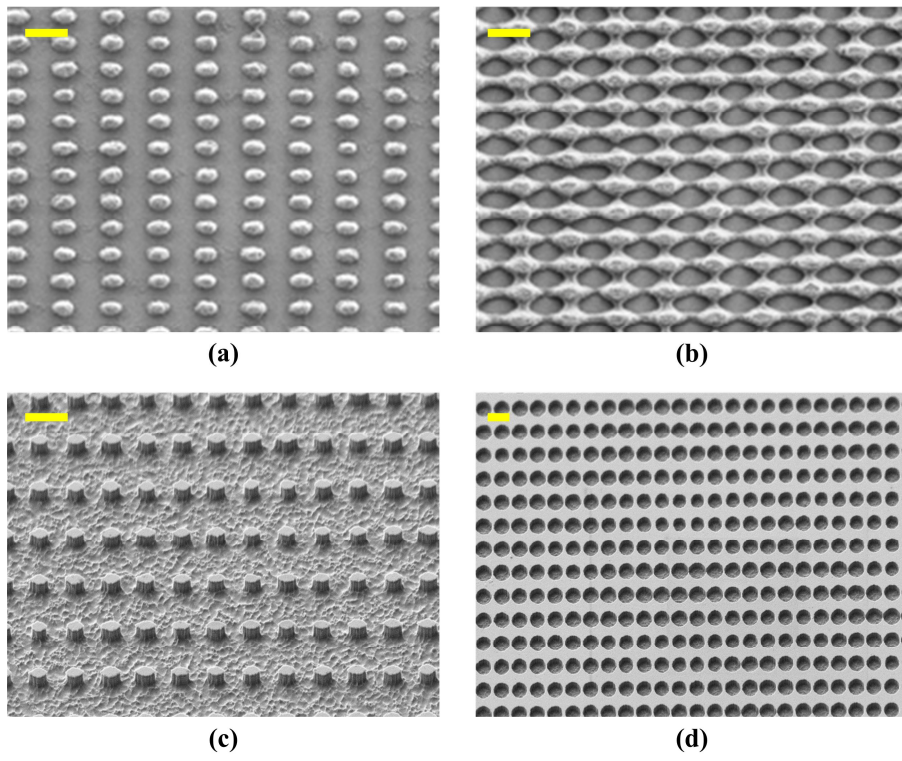


FIG.4

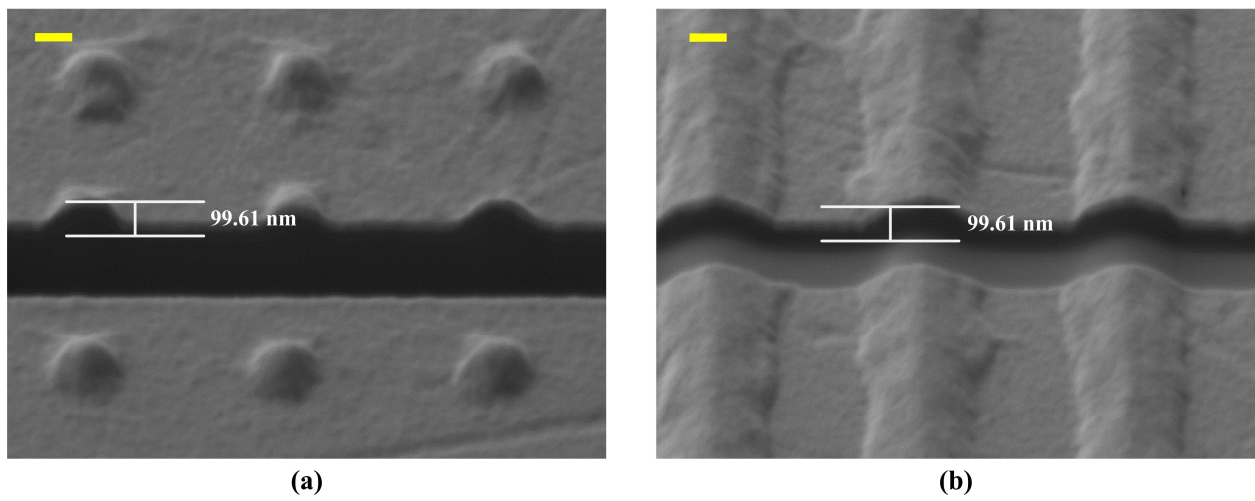


FIG.5

